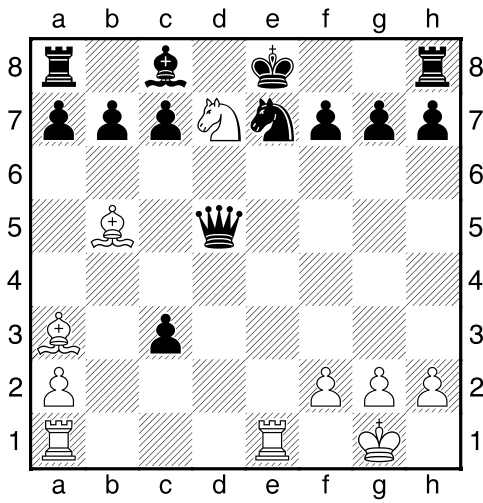
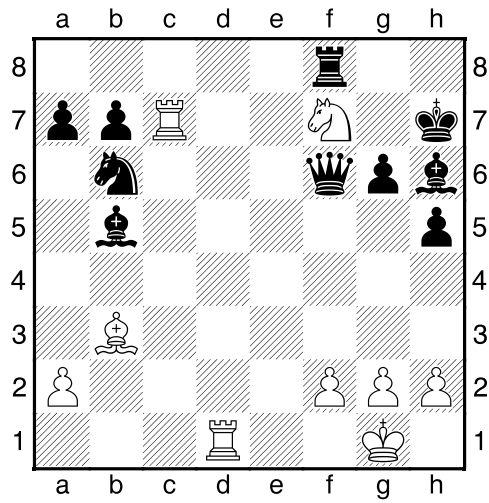


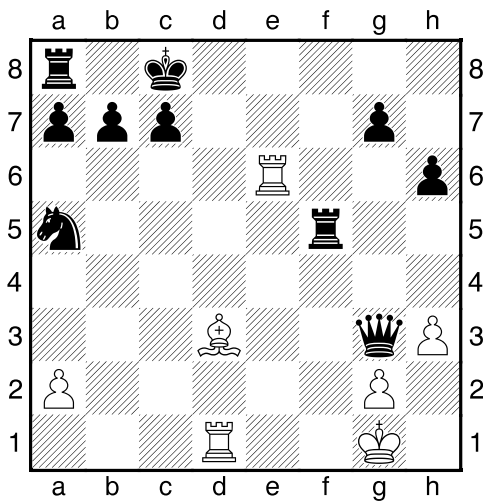
Bílý na tahu



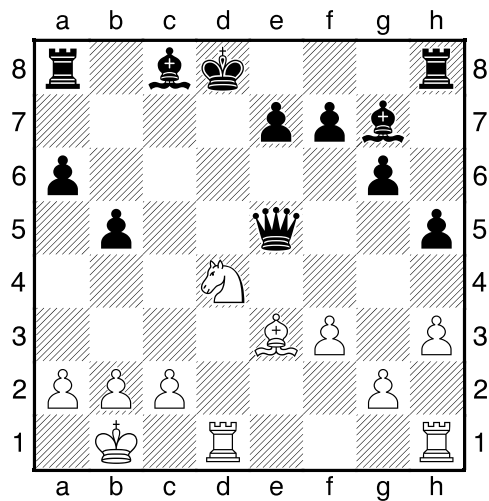
Bílý na tahu



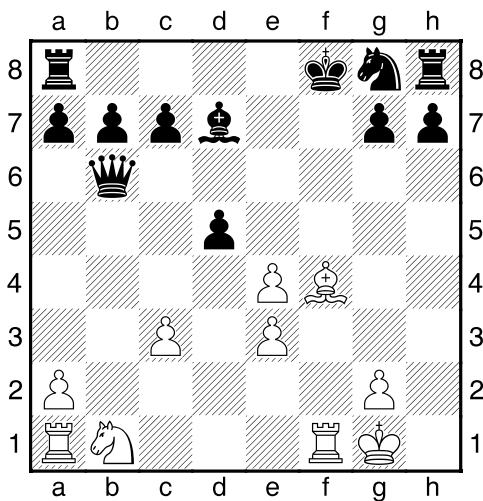
Bílý na tahu



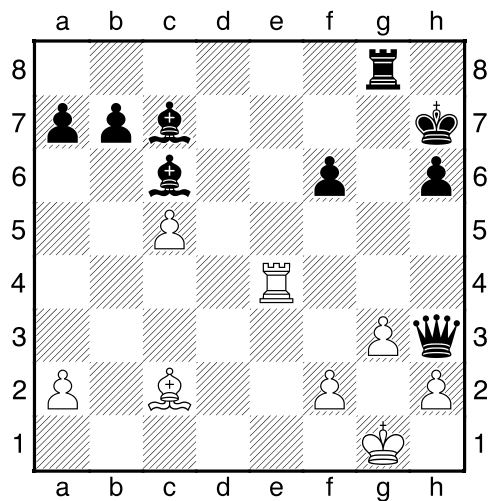
Bílý na tahu



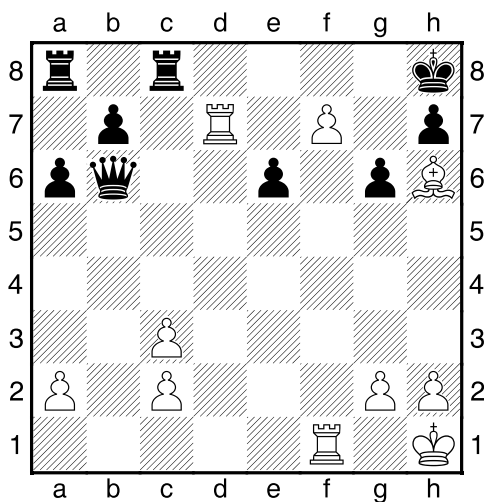
Bílý na tahu



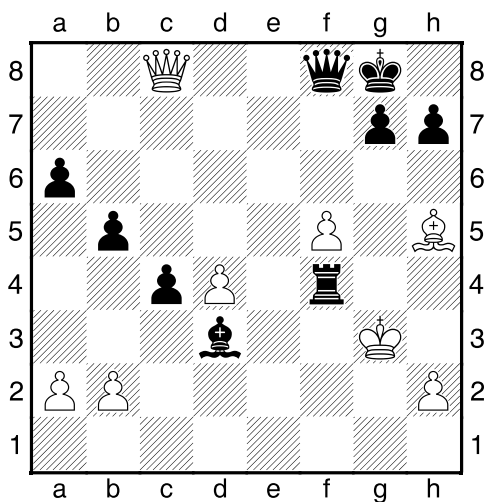
Bílý na tahu



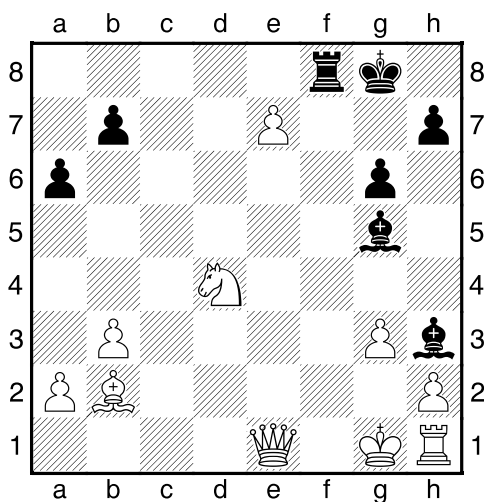
Bílý na tahu



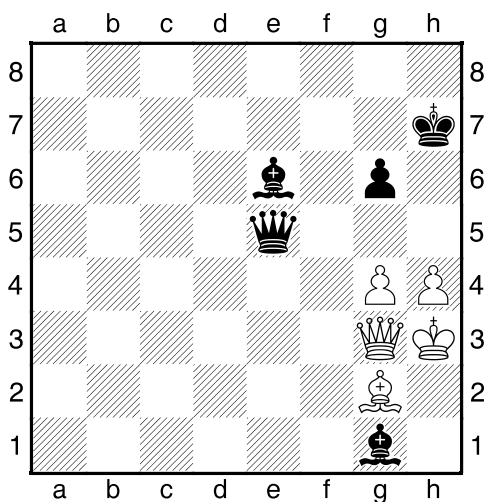
Bílý na tahu



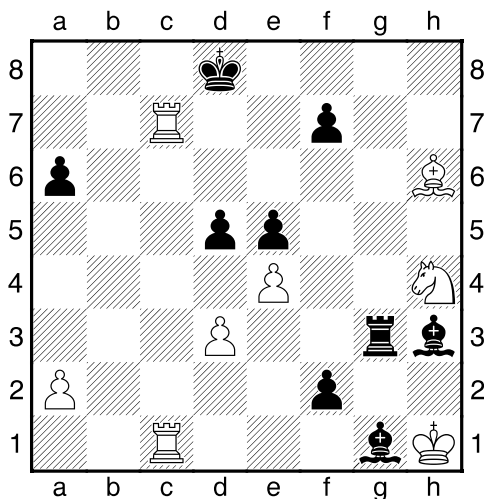
Černý na tahu



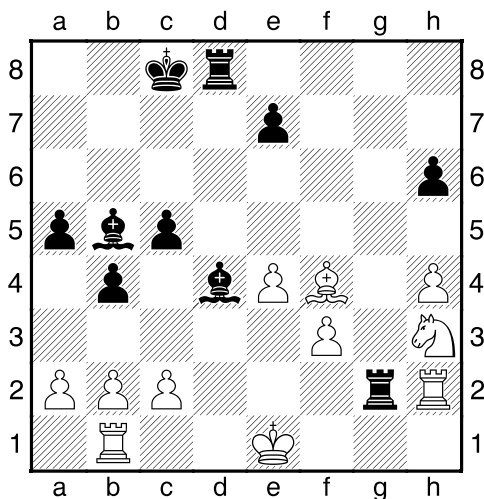
Černý na tahu



Černý na tahu

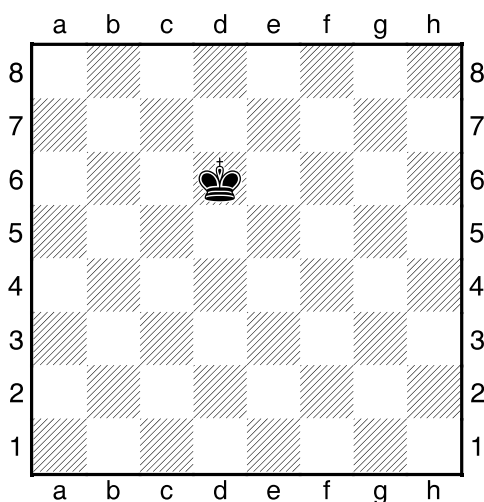


Černý na tahu



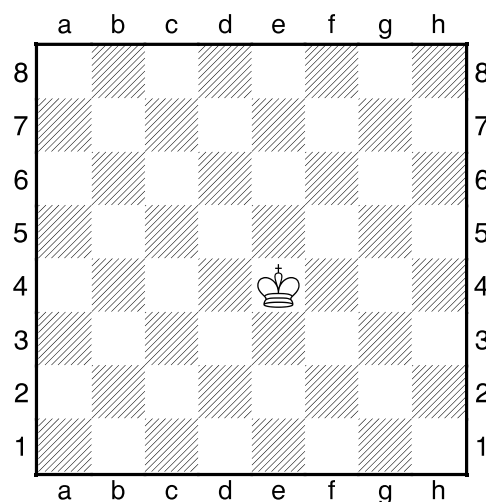


1.příklad Cvičná pozice



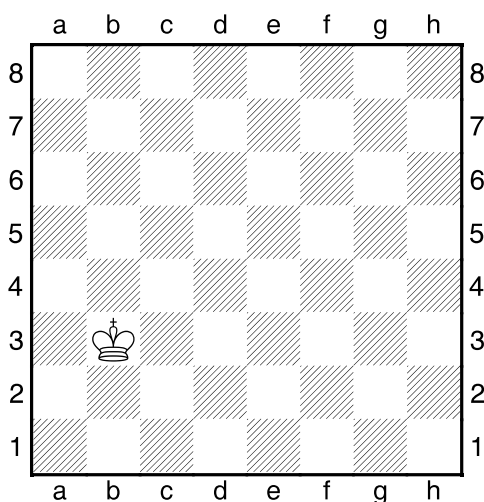
Na kterých polích bude blízká opozice?

2.příklad Cvičná pozice



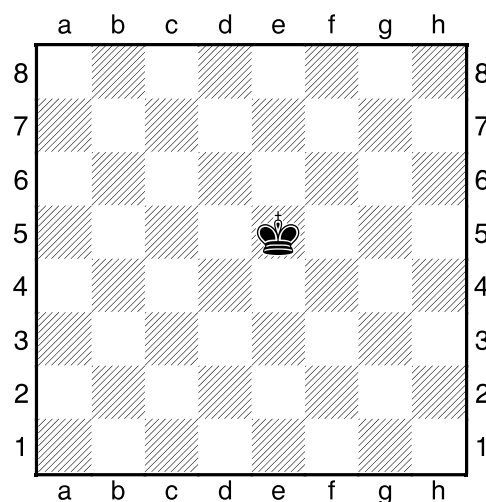
Na kterých polích bude blízká opozice?

3.příklad Cvičná pozice



Na kterých polích bude vzdálená opozice?

4.příklad Cvičná pozice



Na kterých polích bude diagonální opozice?